

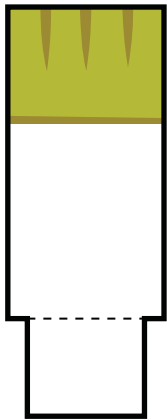
This is what your assembled DR. KUBOID Paper Foldable should look like!



www.pikpok.com/monsterflip

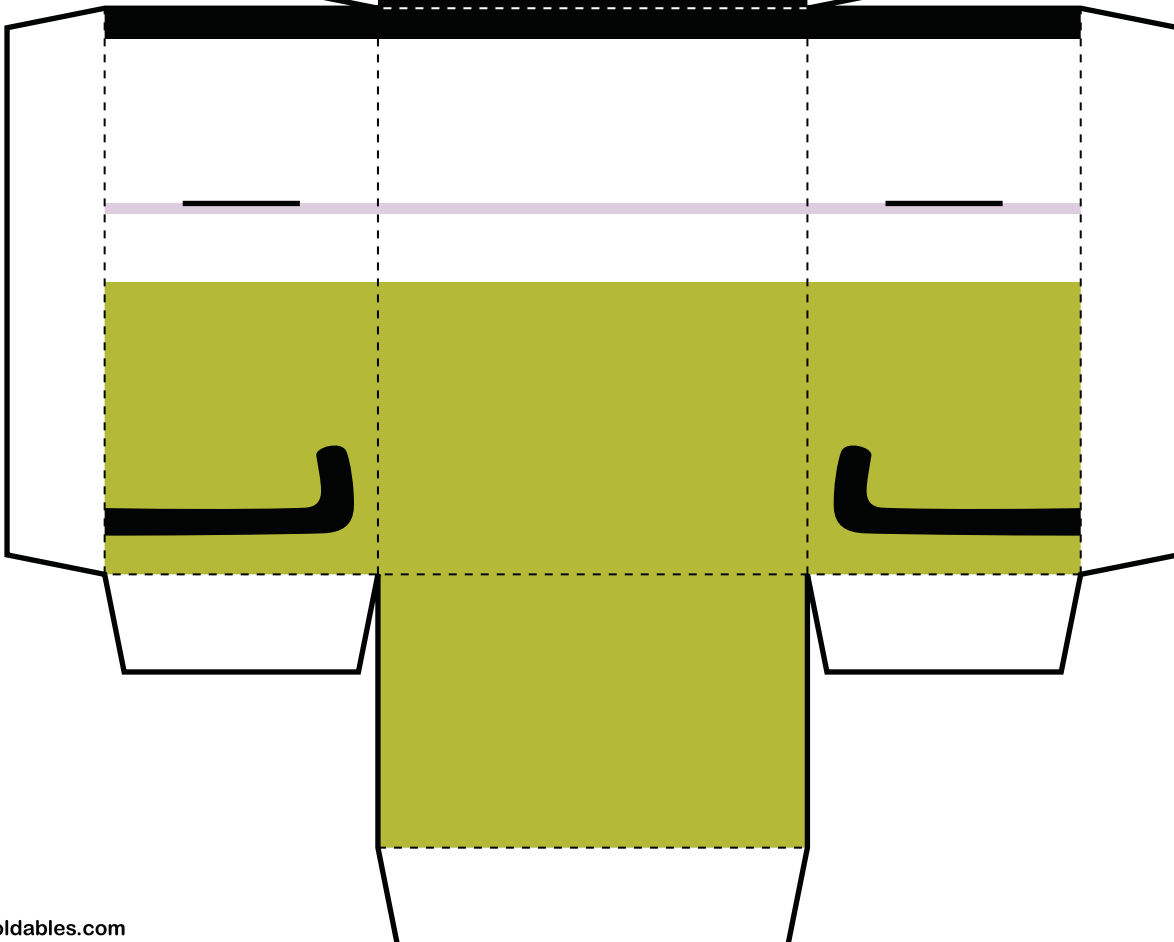
Copyright © 2012 Launching Pad Games.
Published under license by Prodigy Design Limited.
All rights reserved

Print template on sturdy paper.
Cut-out along solid black outlines.
Fold on dotted lines.
Tape or glue folded tabs to insides.
FLIP!



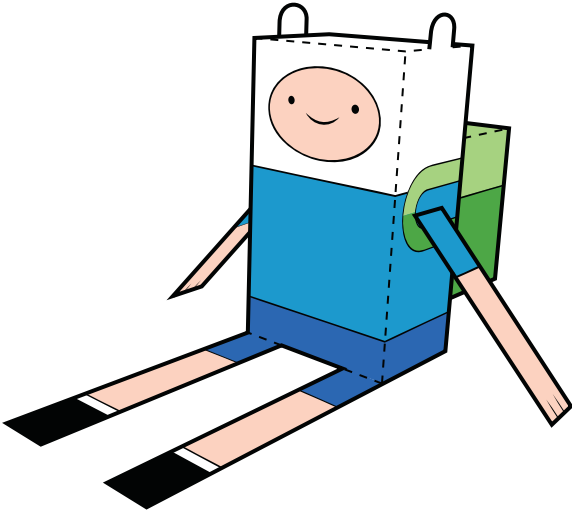
Tape/glue leg sides together.

Cut slits on sides for arm pieces to fit.





Print template on sturdy paper.
Cut carefully along solid black outline.
Score and fold on dotted lines.
Tape or glue folded tabs to the insides.



This is what your assembled FINN Paper Foldable should look like!

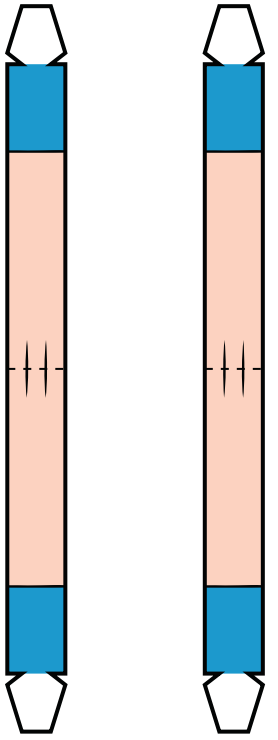
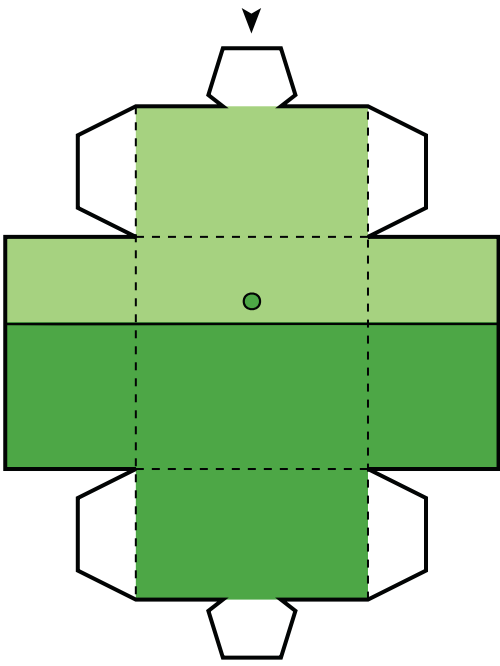
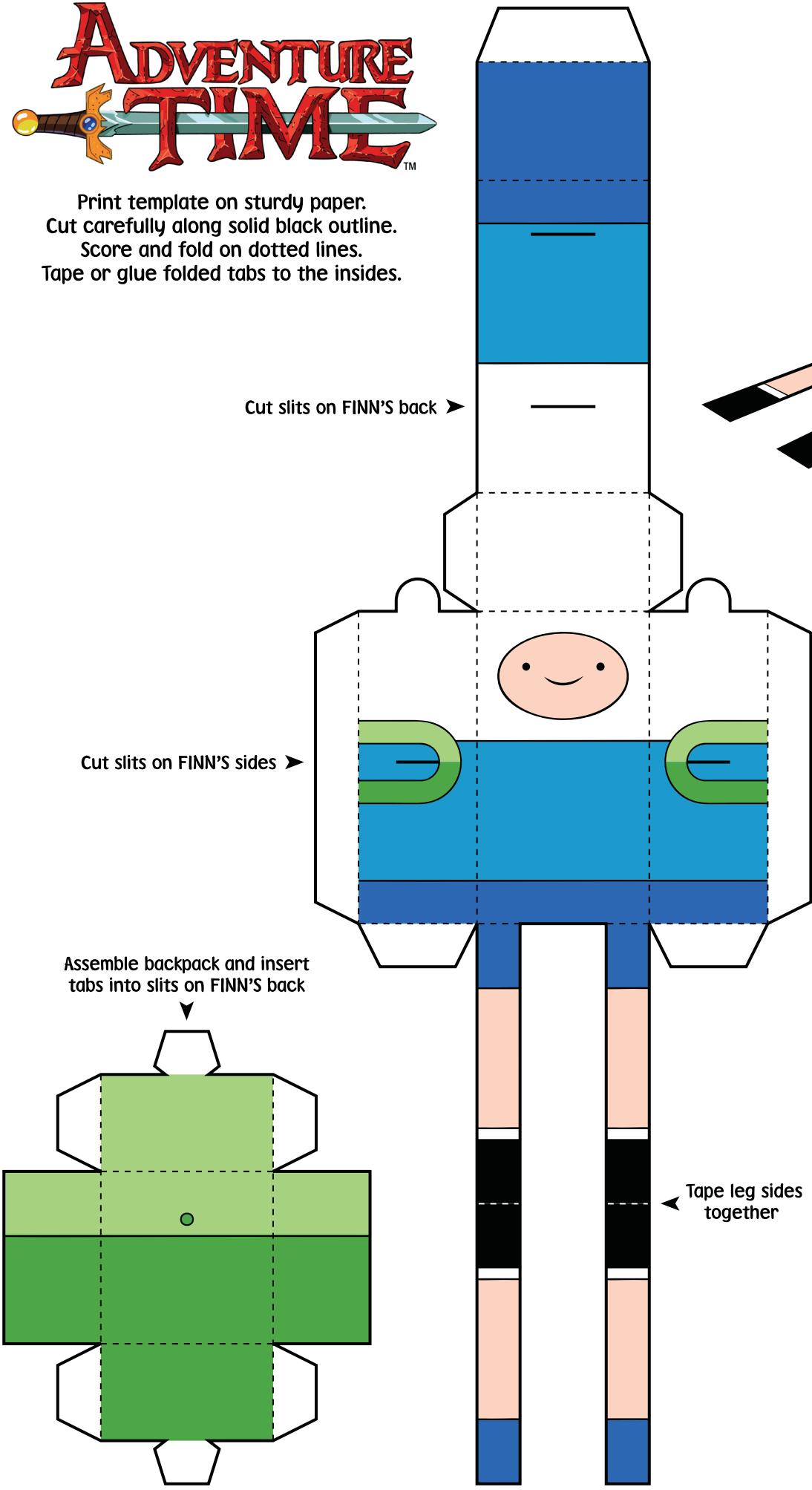
Cut slits on FINN'S back ➤

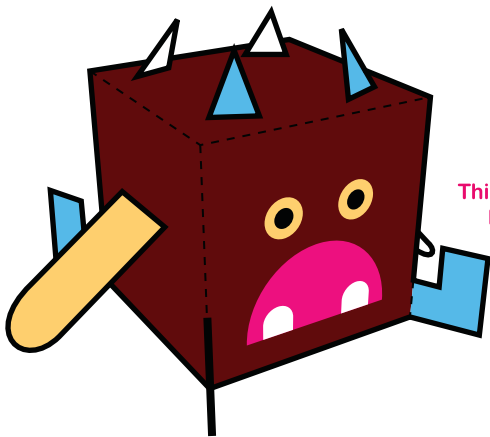
Cut slits on FINN'S sides ➤

Assemble backpack and insert tabs into slits on FINN'S back

Tape arm sides together and insert tabs into slits on FINN'S sides

Tape leg sides together





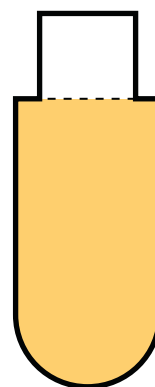
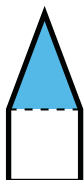
This is what your assembled
FLEEN Paper Foldable
should look like!



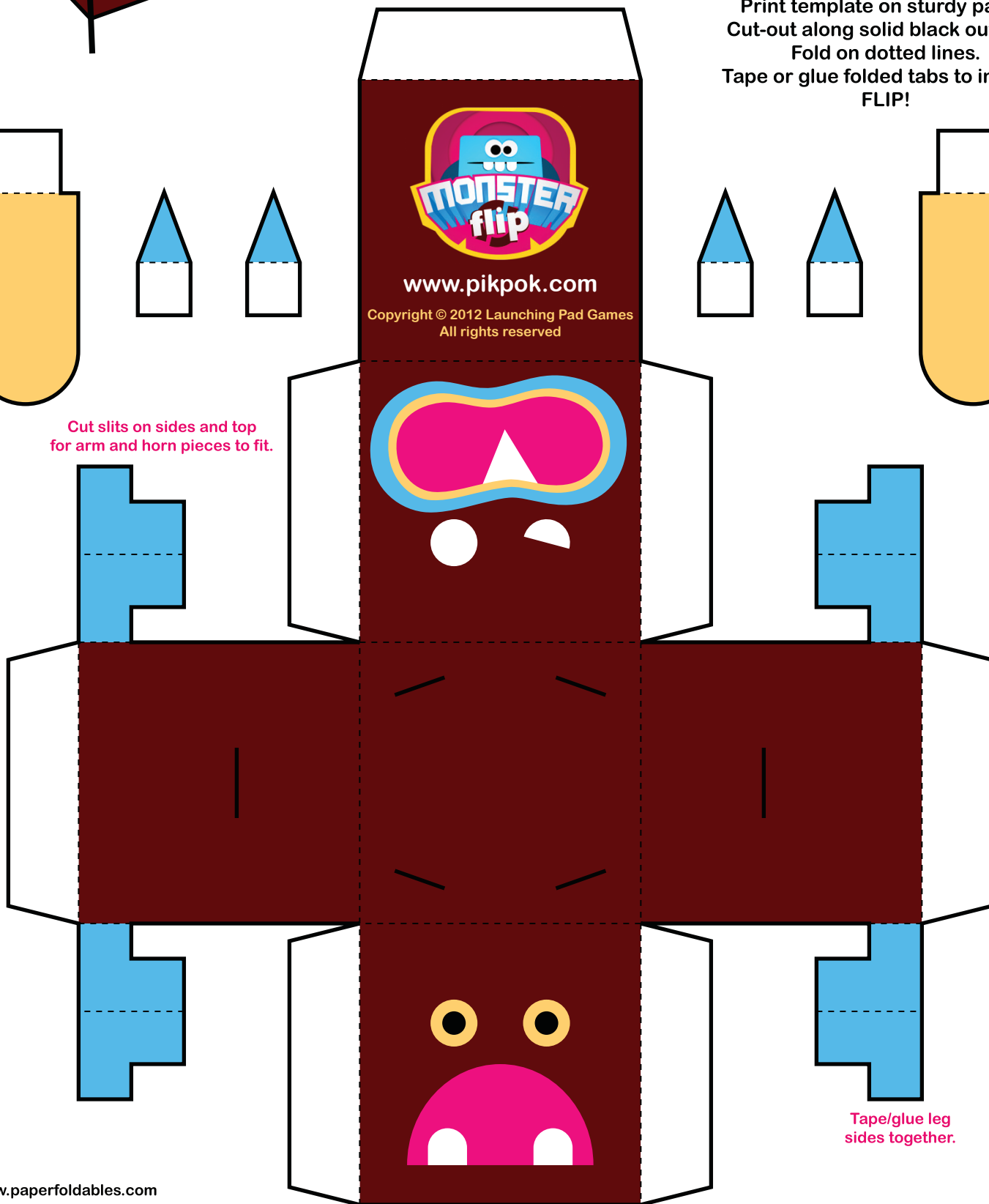
www.pikpok.com/monsterflip

Copyright © 2012 Launching Pad Games.
Published under license by Prodigy Design Limited.
All rights reserved

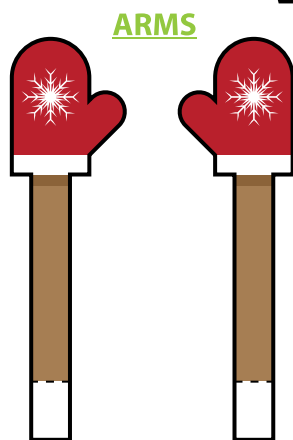
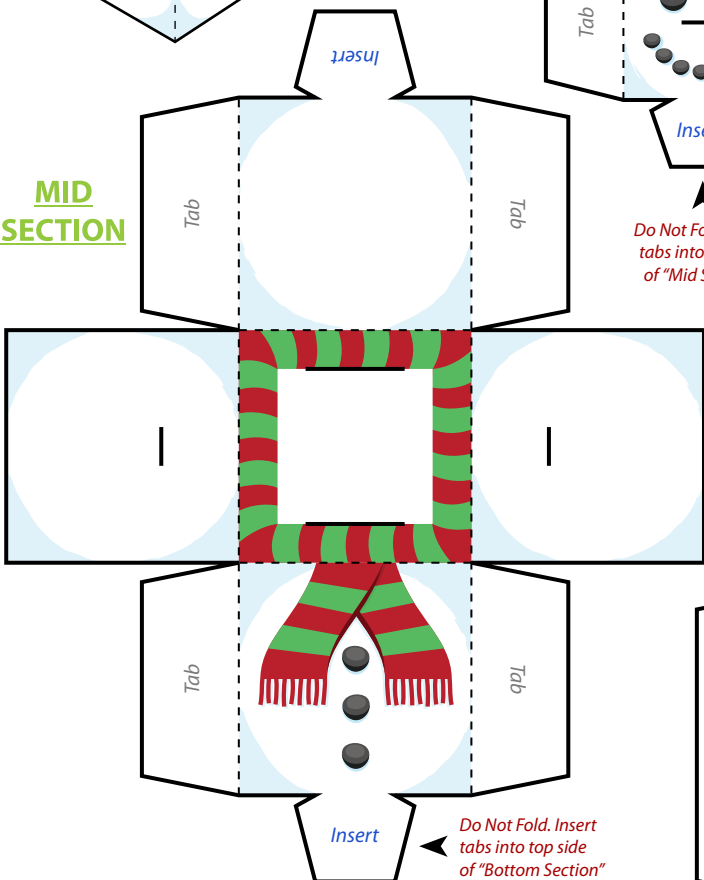
Print template on sturdy paper.
Cut-out along solid black outlines.
Fold on dotted lines.
Tape or glue folded tabs to insides.
FLIP!



Cut slits on sides and top
for arm and horn pieces to fit.



Tape/glue leg
sides together.

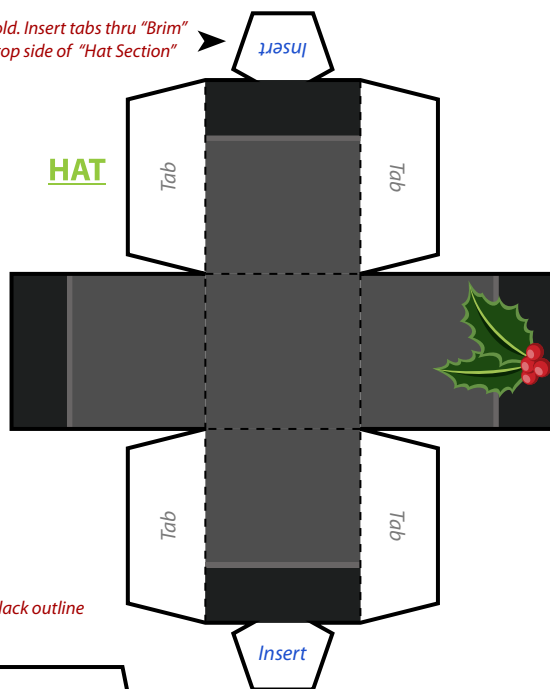


*Insert tabs into sides
of "Mid Section"*

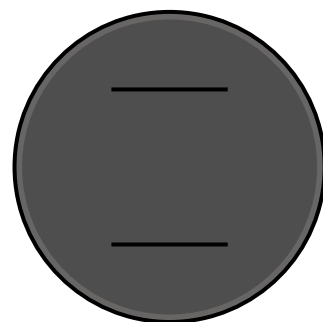
cafe
mom

**Do Not Fold. Insert
tabs into top side
of "Mid Section"**

Do Not Fold. Insert tabs thru "Brim" and into top side of "Hat Section"



BRIM



CARROT NOSE



*Fold along dotted line.
Then tape or glue tabs
to the insides*

Create slices on top of "Bottom Section" in order to attach Mid Section piece

BOTTOM SECTION

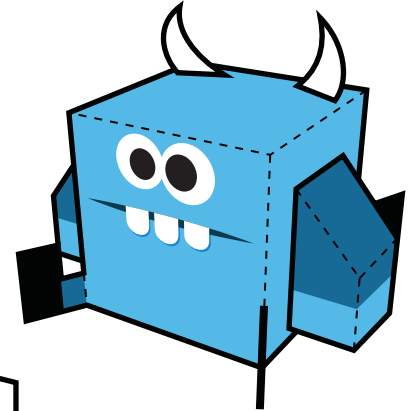
cafe**mom**



www.pikpok.com/monsterflip

Copyright © 2012 Launching Pad Games.
Published under license by Prodigy Design Limited.
All rights reserved

Print template on sturdy paper.
Cut-out along solid black outlines.
Fold on dotted lines.
Tape or glue folded tabs to insides.
FLIP!



This is what your assembled
GLURP Paper Foldable
should look like!

Assemble arm pieces
and fit into slits on sides.

www.pikpok.com
Copyright © 2012 Launching Pad Games
All rights reserved

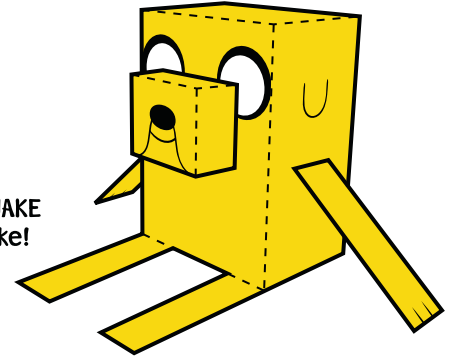
Cut slits on sides and top
for arm and horn pieces to fit.

Tape/glue leg
sides together.

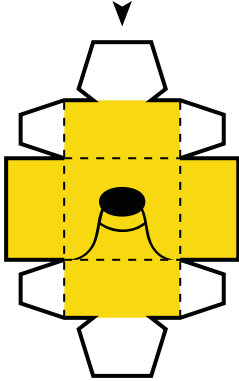


Print template on sturdy paper.
Cut carefully along solid black outline.
Score and fold on dotted lines.
Tape or glue folded tabs to the insides.

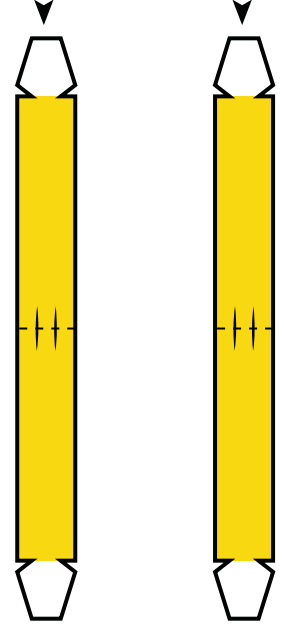
This is what your assembled JAKE
Paper Foldable should look like!



Assemble muzzle and insert
tabs into slits on JAKE'S face

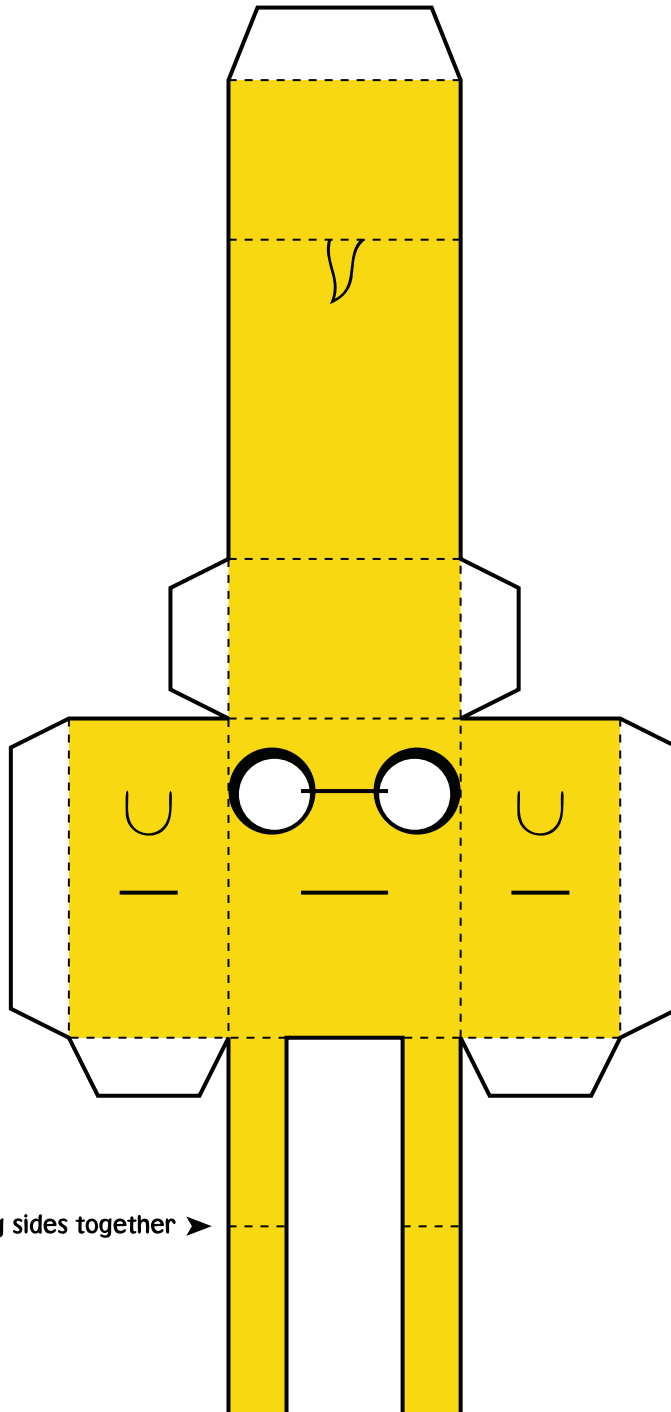


Tape arm sides together and insert
tabs into slits on JAKE'S sides



Cut slits on JAKE'S sides and face ➤

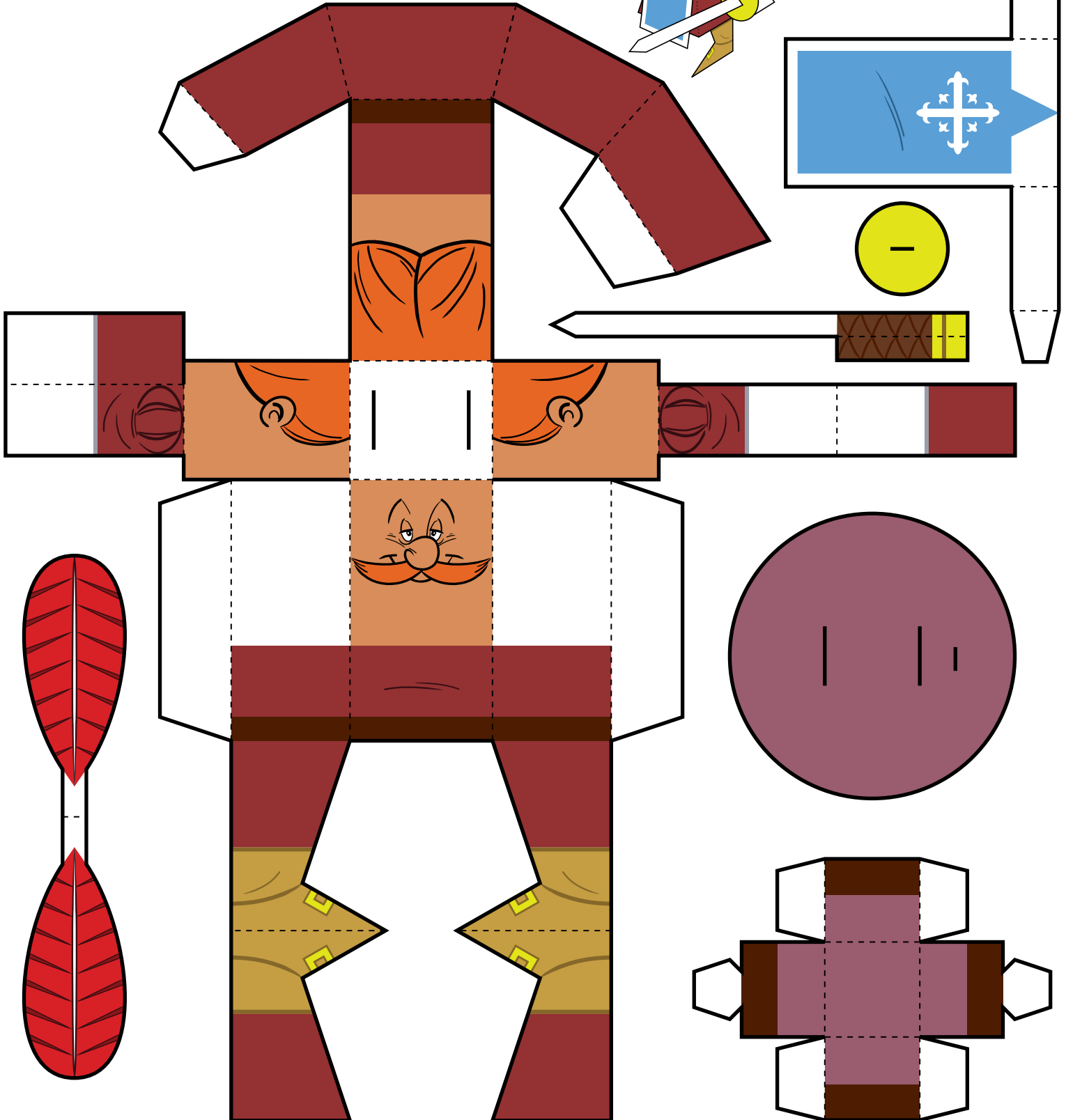
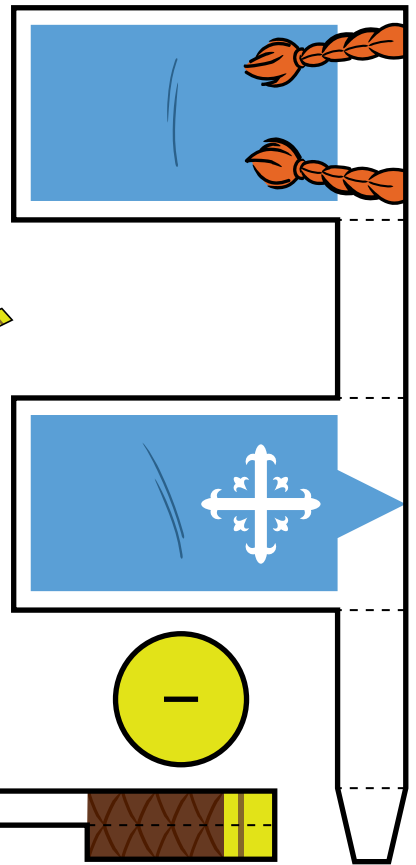
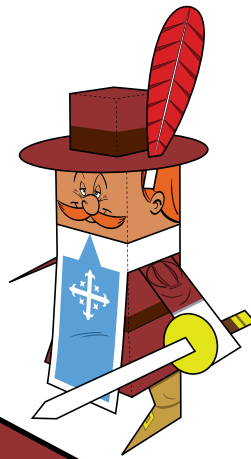
Tape leg sides together ➤

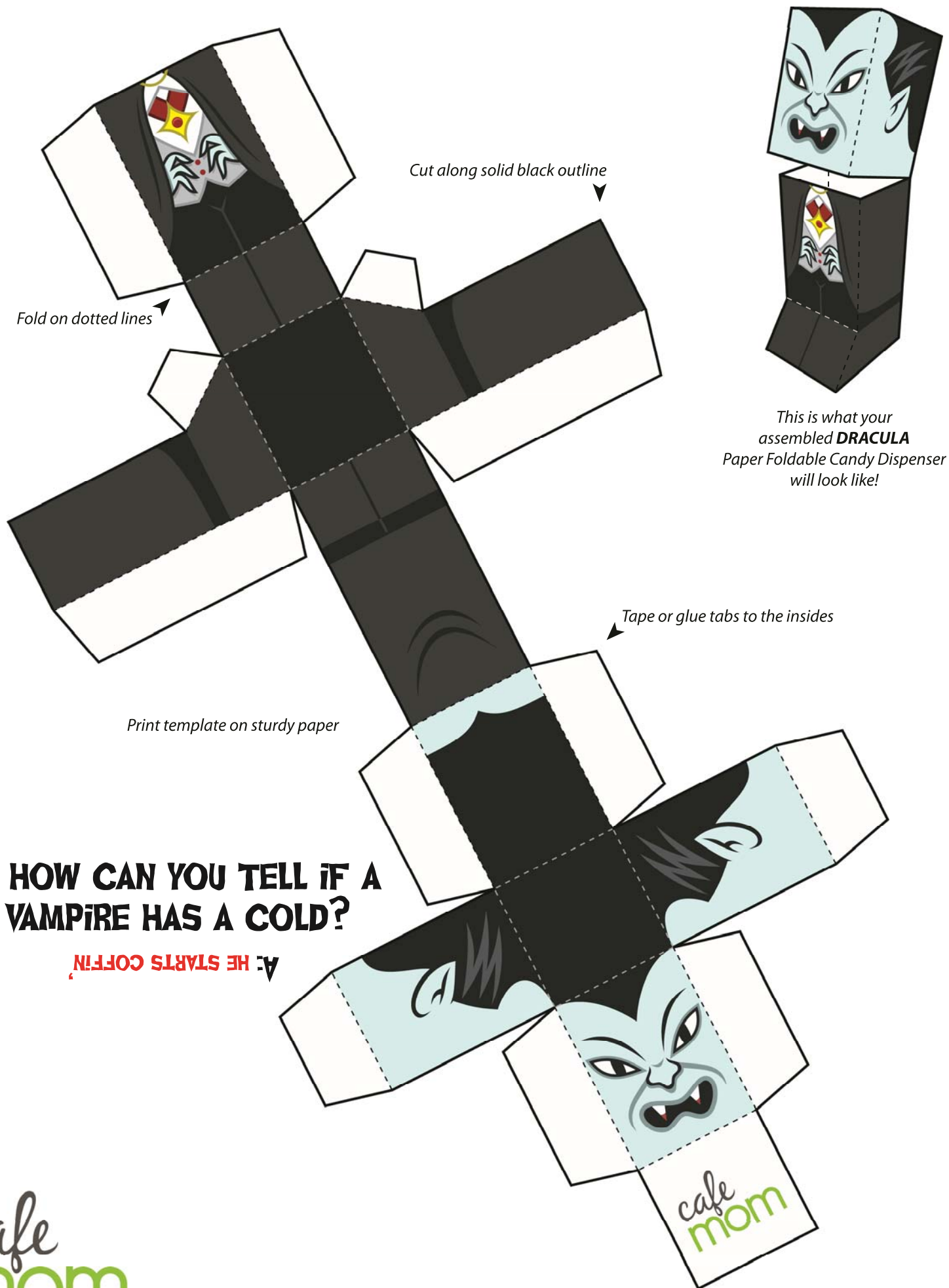


Legendo's
The Three Musketeers
One for All!

© 2009 Legendo Entertainment AB. All rights reserved - www.legendo.com

Print.
 Cut.
 Fold.
 Tape.





Fold on dotted lines

Cut along solid black outline

This is what your
assembled **DRACULA**
Paper Foldable Candy Dispenser
will look like!

Tape or glue tabs to the insides

Print template on sturdy paper

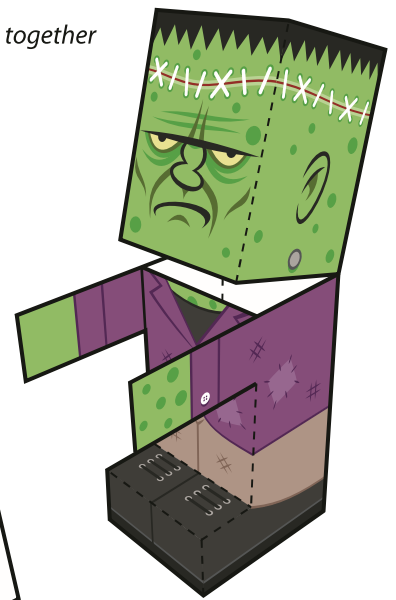
**Q: HOW CAN YOU TELL IF A
VAMPIRE HAS A COLD?**

A: HE STARTS COFFIN'

cafe
mom

Cut along solid black outline

Attach arm sides together



This is what your assembled **FRANKENSTEIN** Paper Foldable Candy Dispenser will look like!

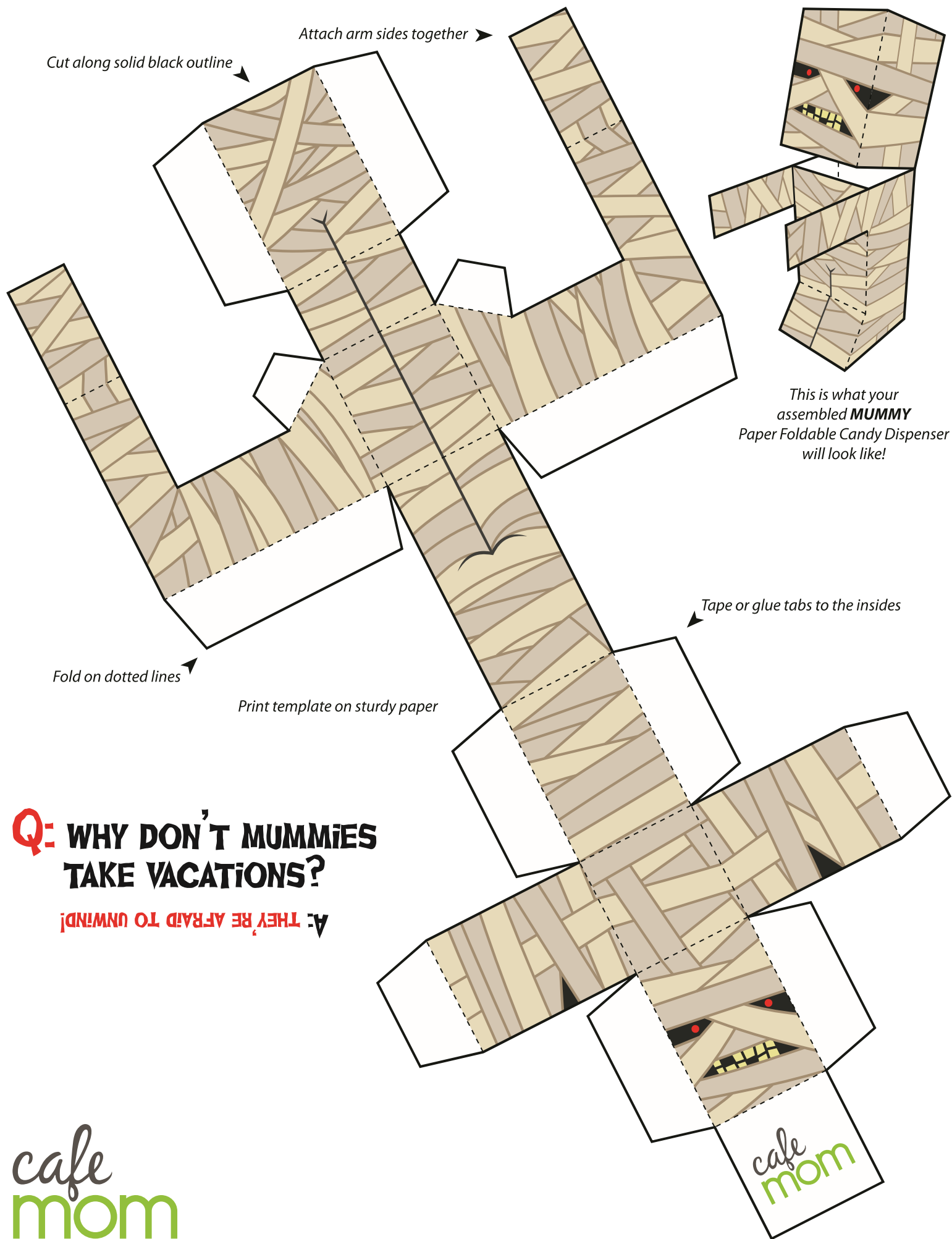
Fold on dotted lines

Print template on sturdy paper

Tape or glue tabs to the insides

Q: WHAT DO YOU DO WITH A GREEN MONSTER?

A: WAIT UNTIL IT RIPENS



Cut along solid black outline

Attach arm sides together

Fold on dotted lines

Print template on sturdy paper

Tape or glue tabs to the insides

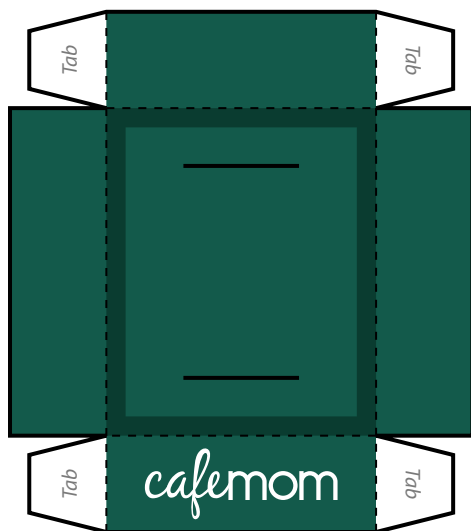
This is what your assembled **MUMMY** Paper Foldable Candy Dispenser will look like!

Q: WHY DON'T MUMMIES TAKE VACATIONS?

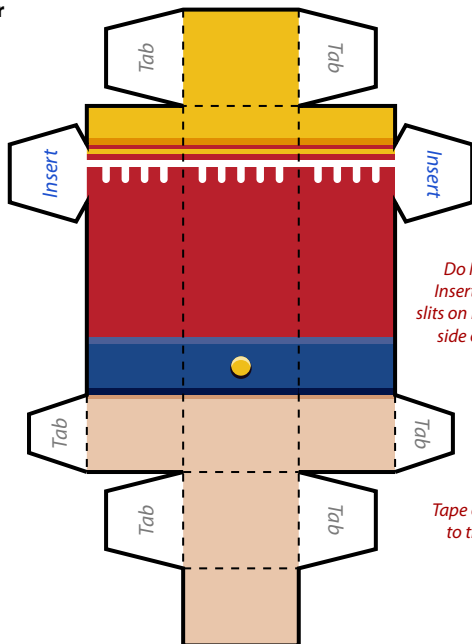
A: THEY'RE AFRAID TO UNWIND!

cafe
mom

BASE



LEFT ARM



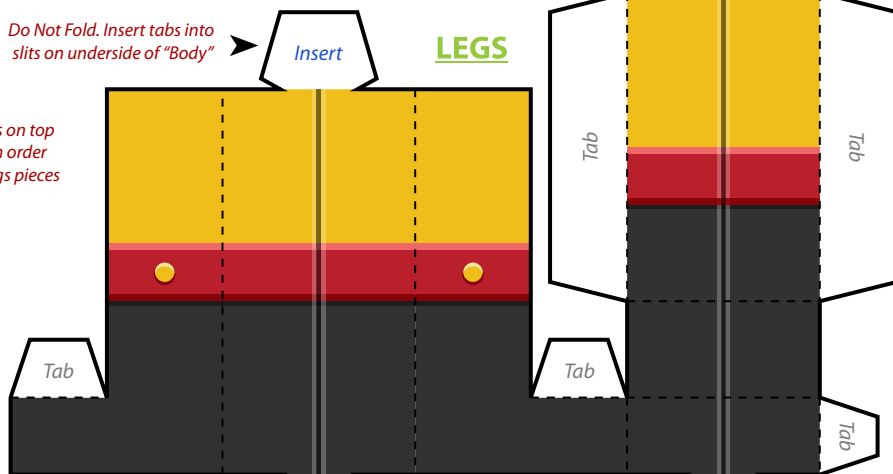
*Do Not Fold .
Insert tabs into
slits on left and right
side of "Body"*

*Tape or glue tabs
to the insides*

*Do Not Fold. Insert tabs into
slits on underside of "Body"*

Create slices on top of "Base" in order to attach legs pieces

LEGS



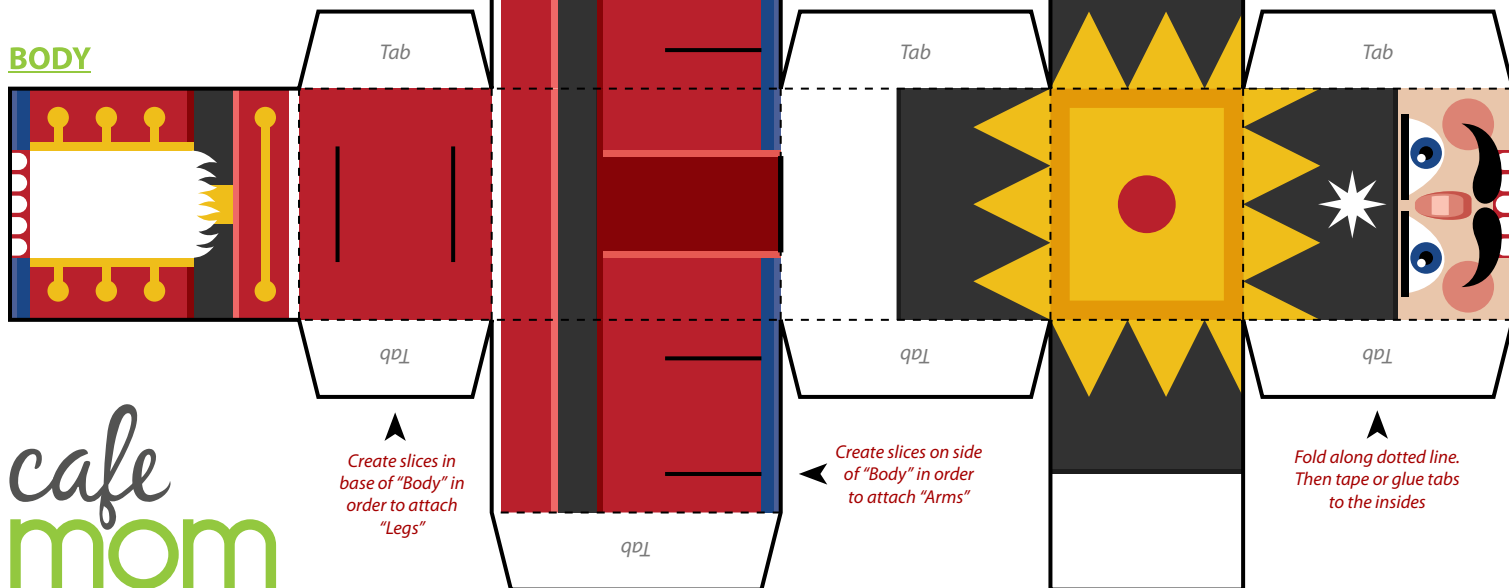
Insert

*Fold along dotted line.
Then tape or glue tabs
to the insides*

Insert

*Do Not Fold.
Insert tabs into top
side of "Base"*

BODY



Create slices in
base of "Body" in
order to attach
"Legs"

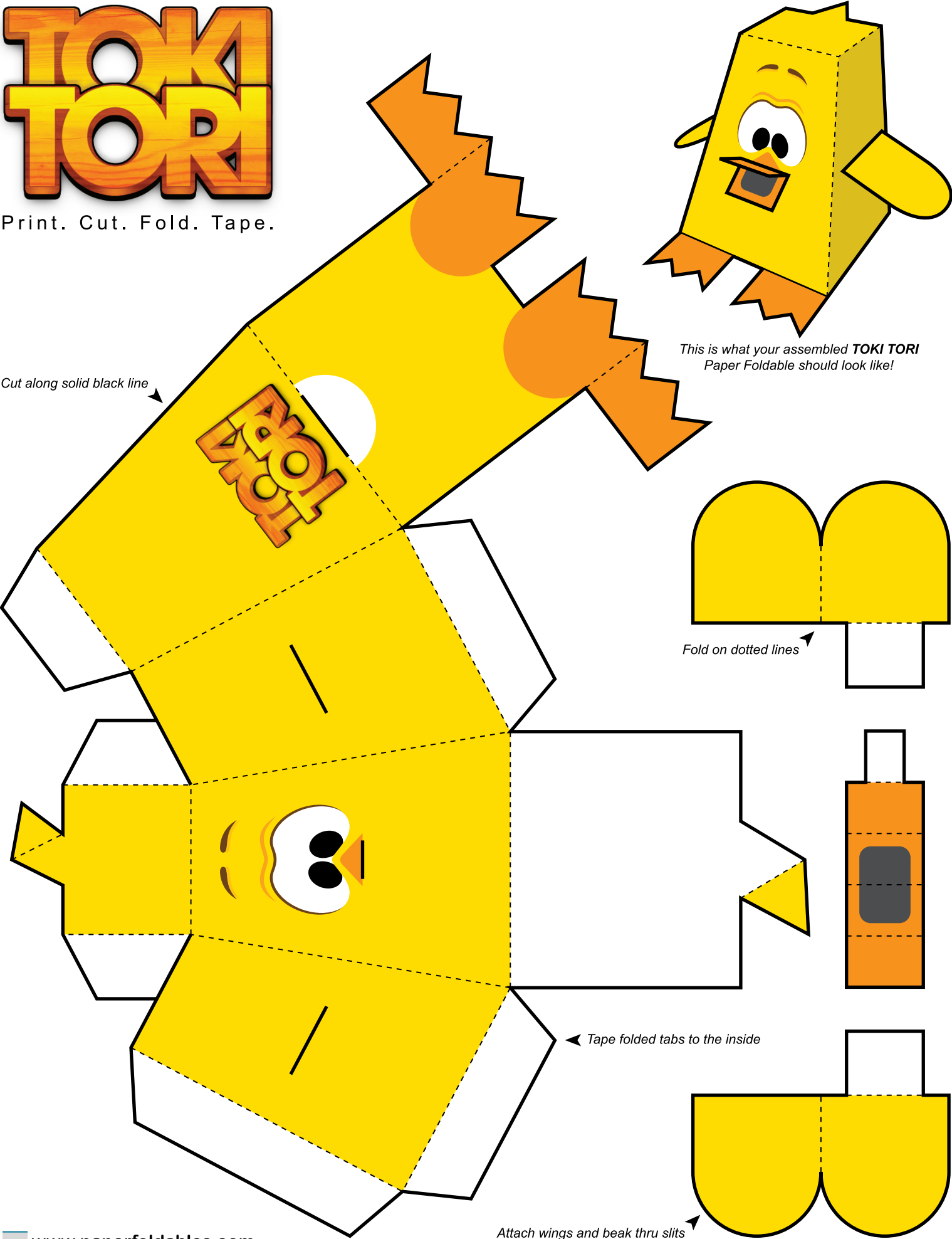
Create slices on side of "Body" in order to attach "Arms"

*Fold along dotted line.
Then tape or glue tabs
to the insides*

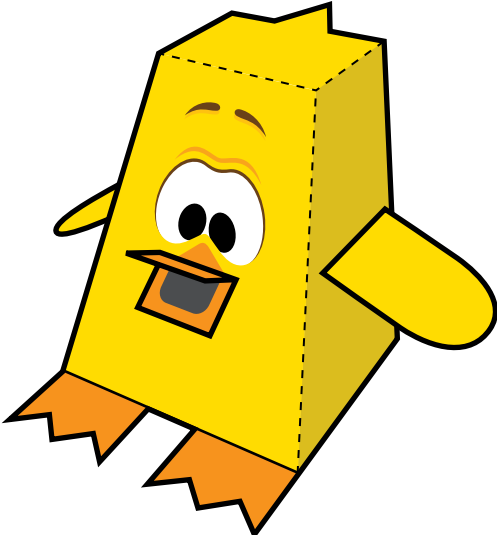
cafe
mom



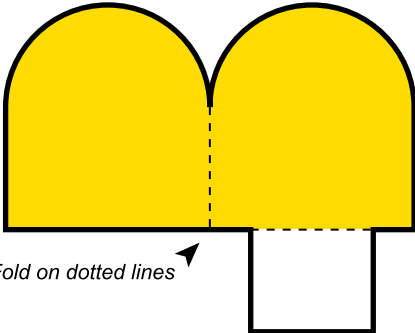
Print. Cut. Fold. Tape.



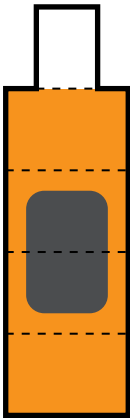
Cut along solid black line



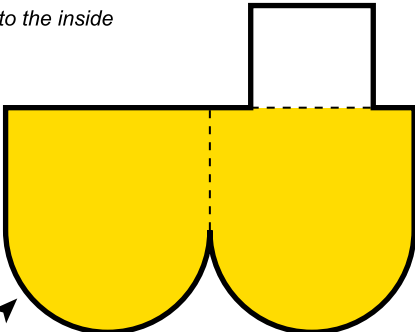
This is what your assembled TOKI TORI Paper Foldable should look like!



Fold on dotted lines



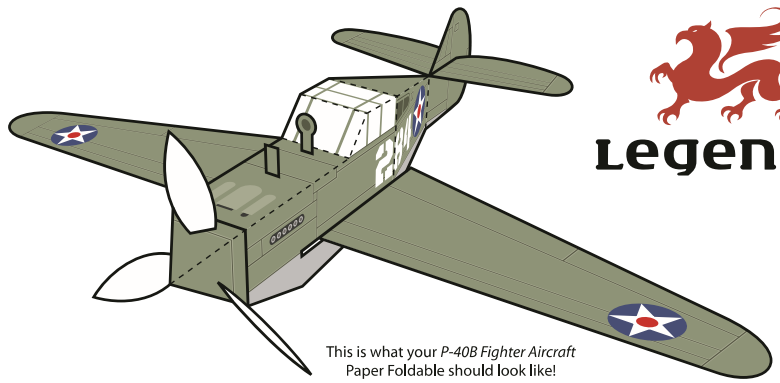
Tape folded tabs to the inside



Attach wings and beak thru slits

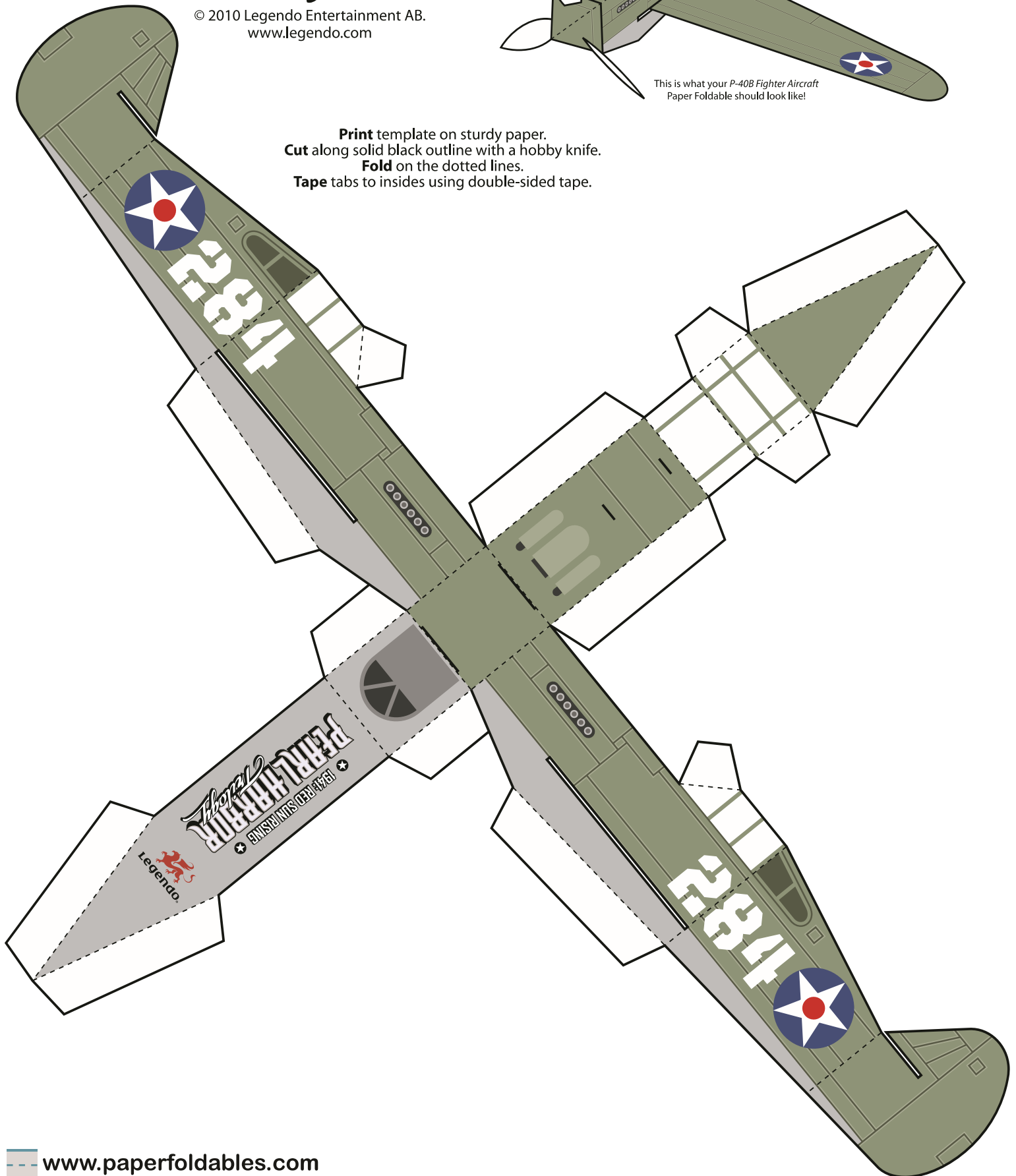
★ 1941: RED SUN RISING ★
PEARL HARBOR
Trilogy

© 2010 Legendo Entertainment AB.
www.legendo.com



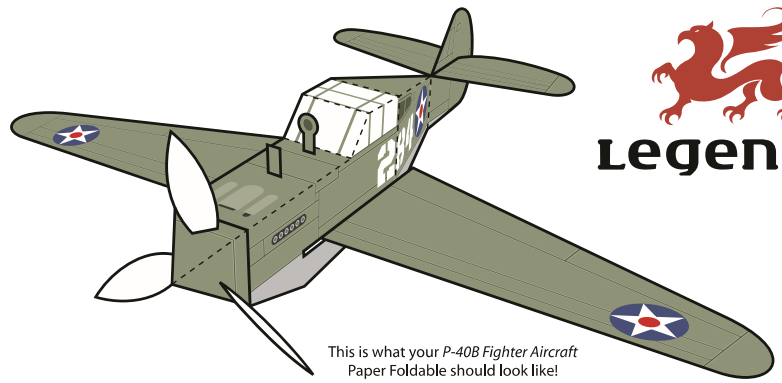
This is what your P-40B Fighter Aircraft
Paper Foldable should look like!

Print template on sturdy paper.
Cut along solid black outline with a hobby knife.
Fold on the dotted lines.
Tape tabs to insides using double-sided tape.

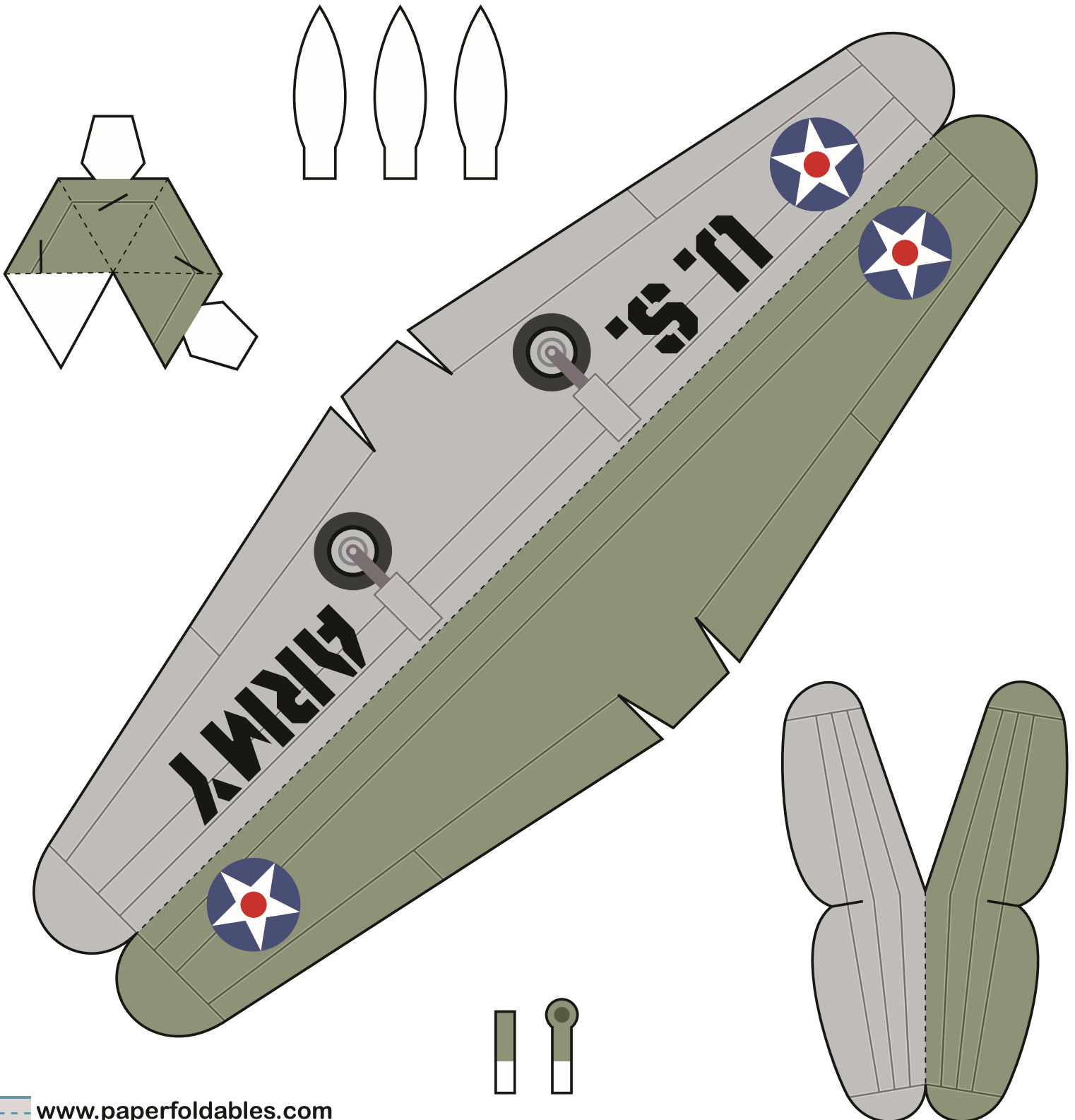


★ 1941: RED SUN RISING ★
PEARL HARBOR
Trilogy

© 2010 Legendo Entertainment AB. - www.legendo.com

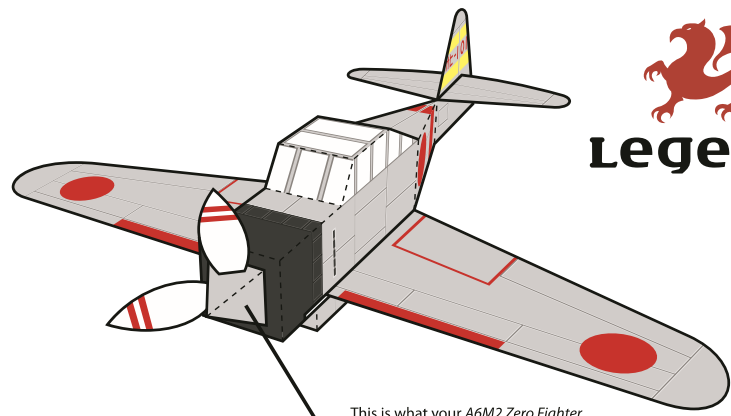


This is what your P-40B Fighter Aircraft
Paper Foldable should look like!



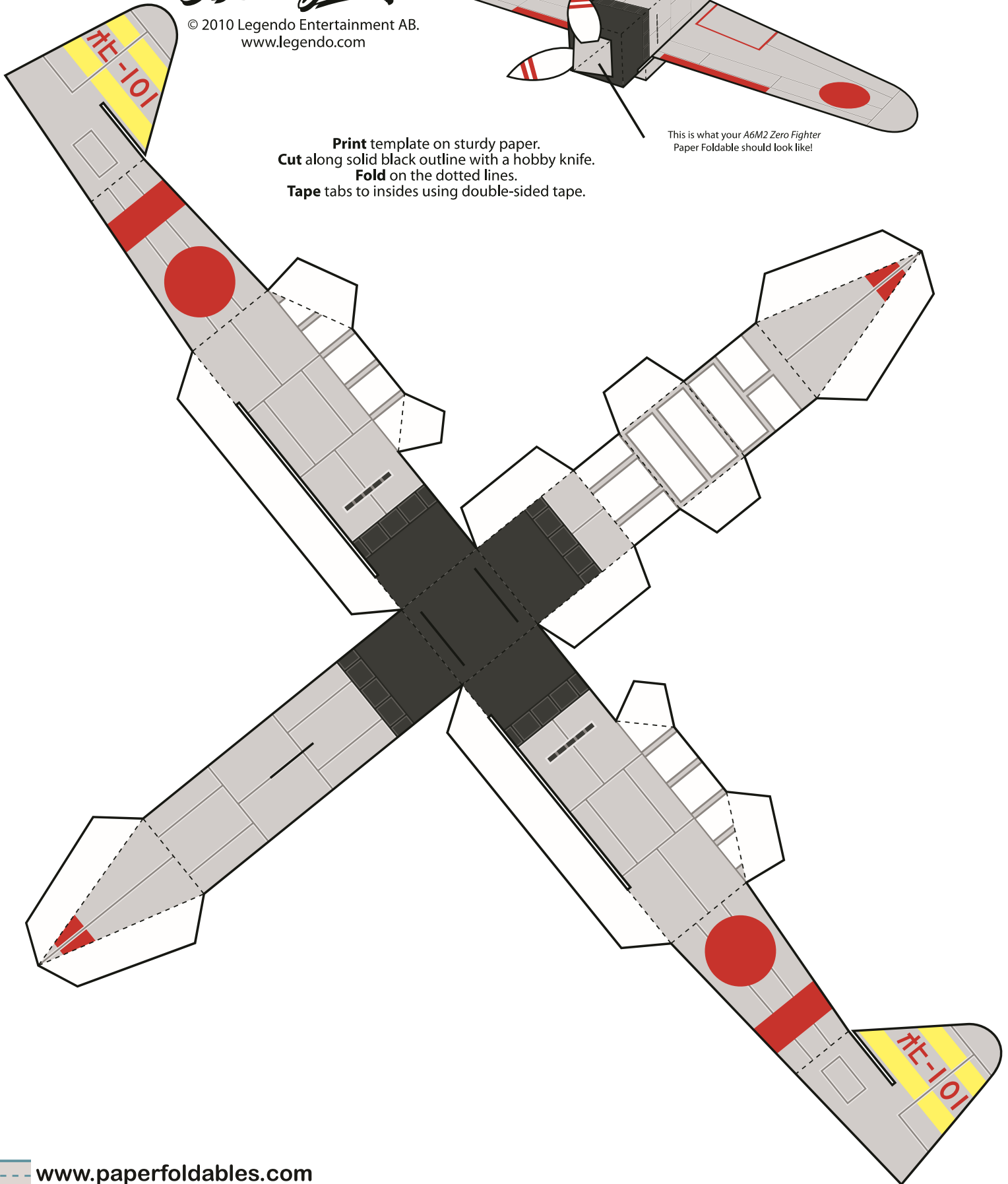
★ 1941: RED SUN RISING ★
PEARL HARBOR
Trilogy

© 2010 Legendo Entertainment AB.
www.legendo.com



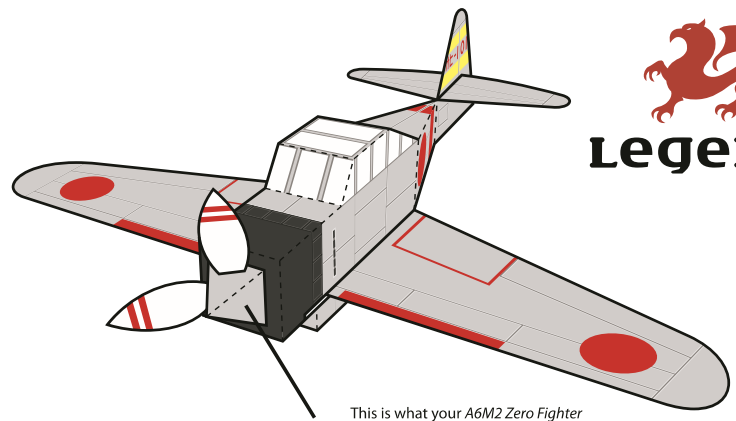
This is what your A6M2 Zero Fighter
Paper Foldable should look like!

Print template on sturdy paper.
Cut along solid black outline with a hobby knife.
Fold on the dotted lines.
Tape tabs to insides using double-sided tape.

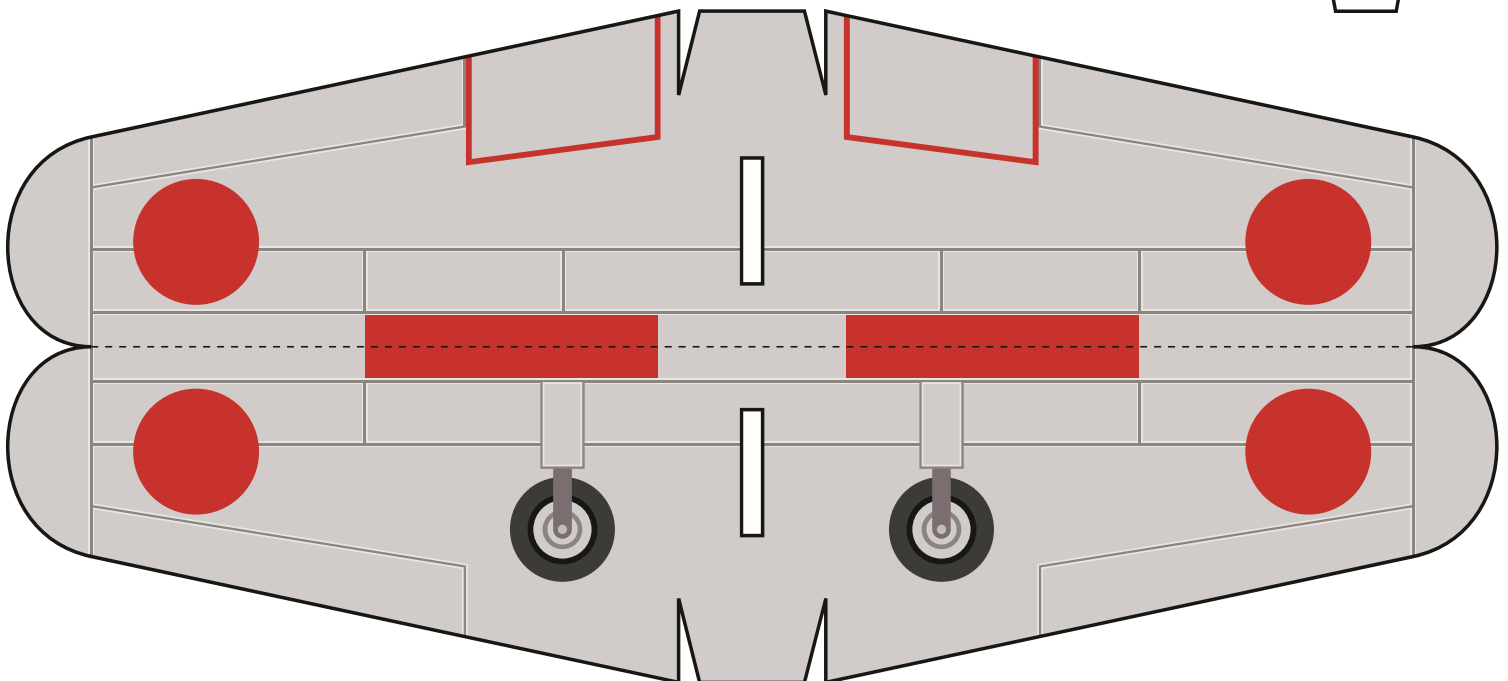
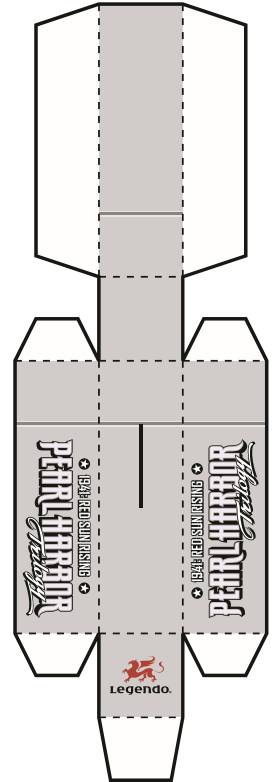
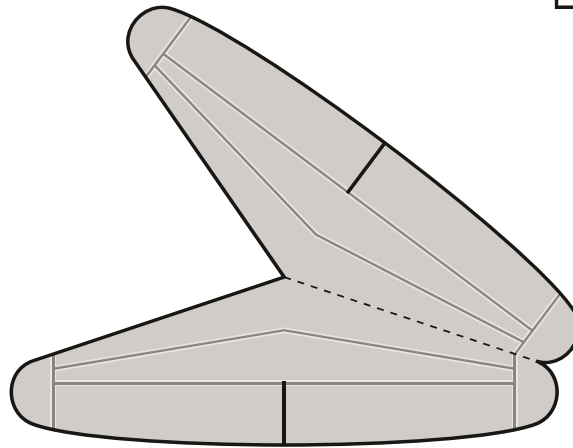
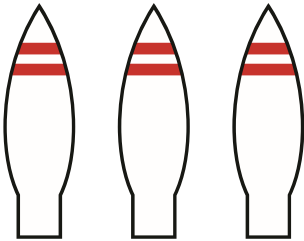
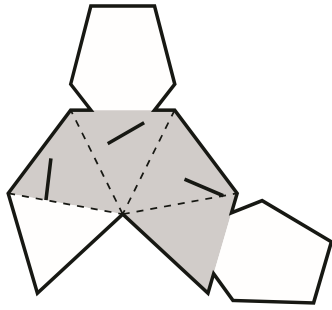


★ 1941: RED SUN RISING ★
PEARL HARBOR
Trilogy

© 2010 Legendo Entertainment AB. - www.legendo.com

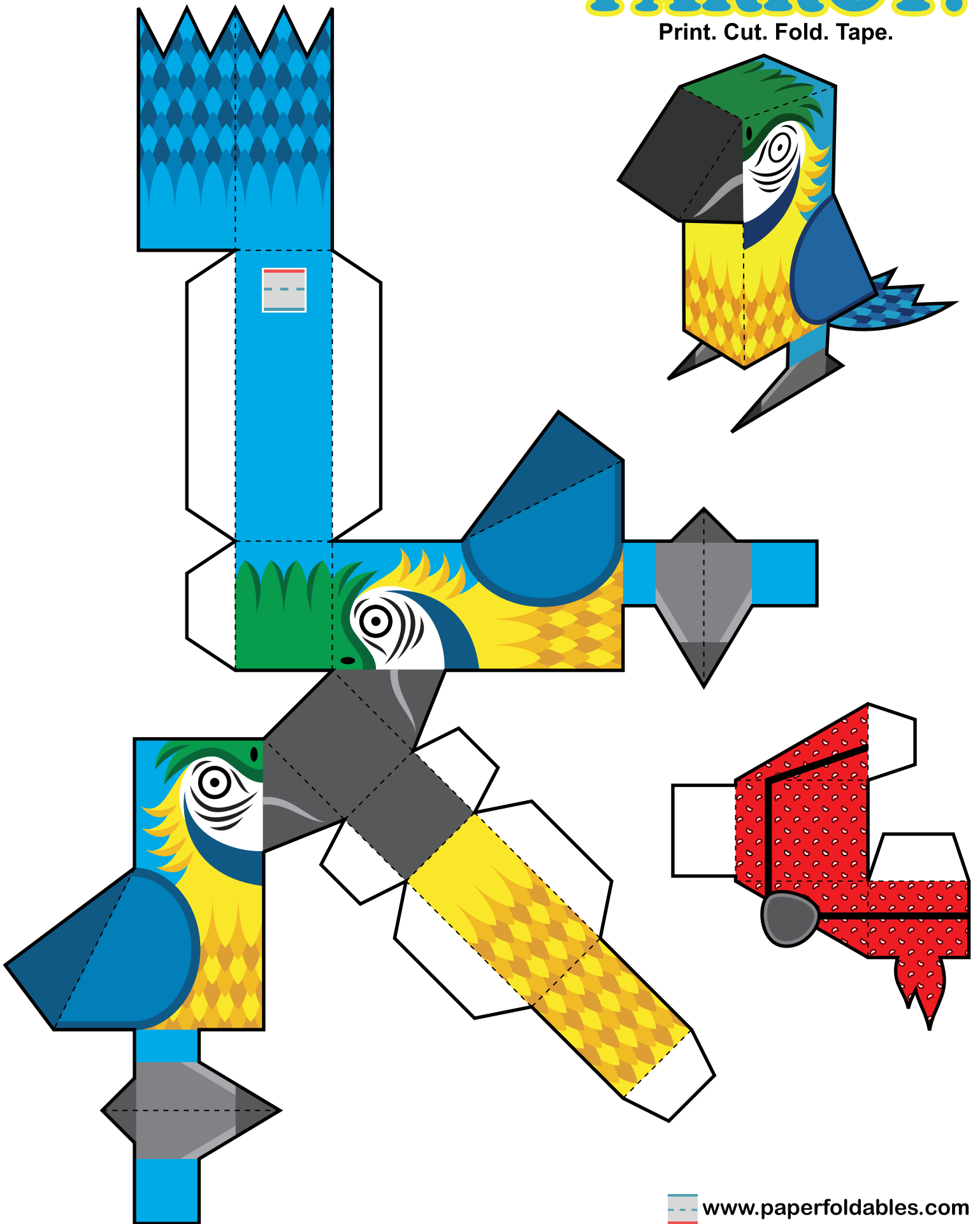


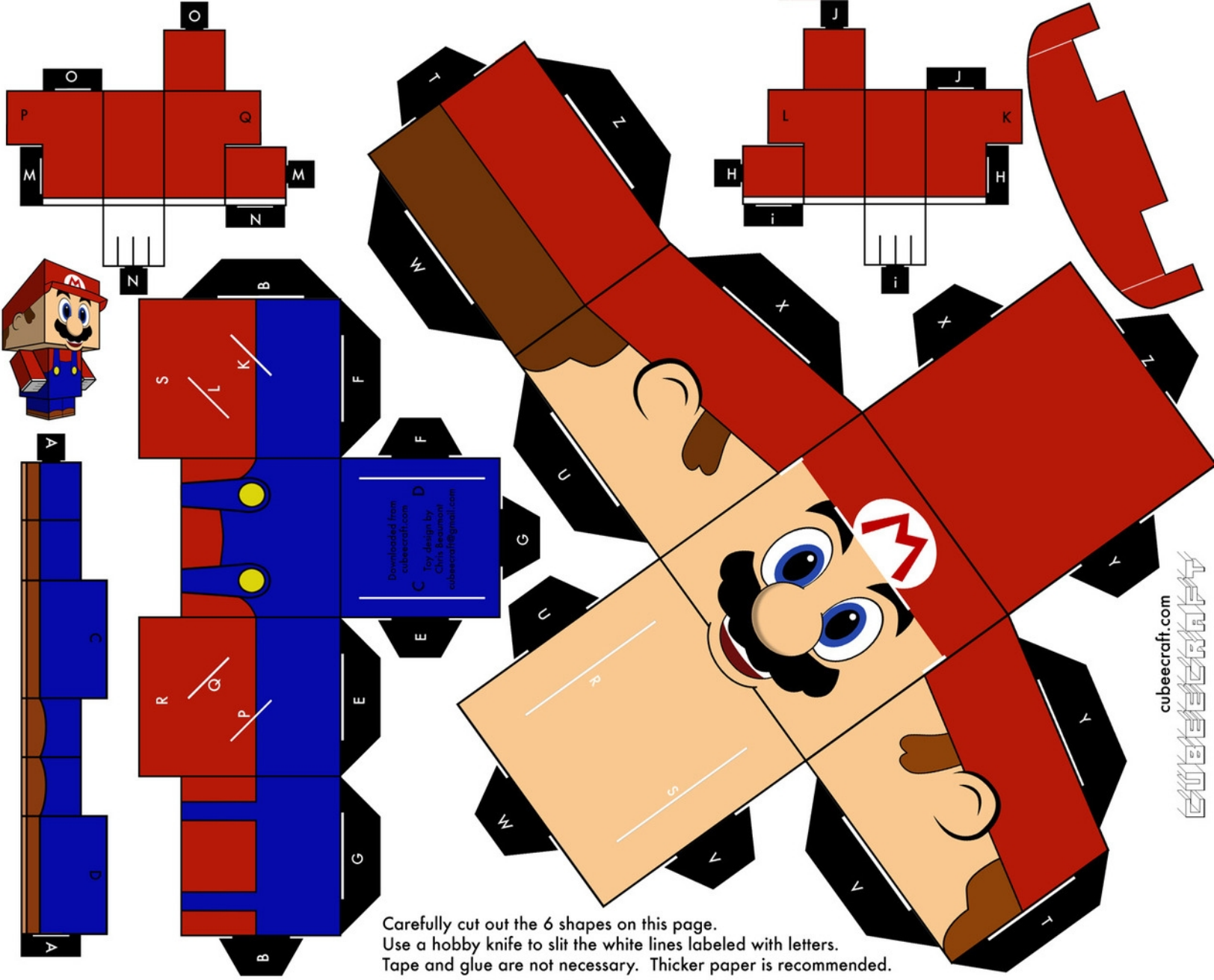
This is what your A6M2 Zero Fighter
 Paper Foldable should look like!



PARROT!

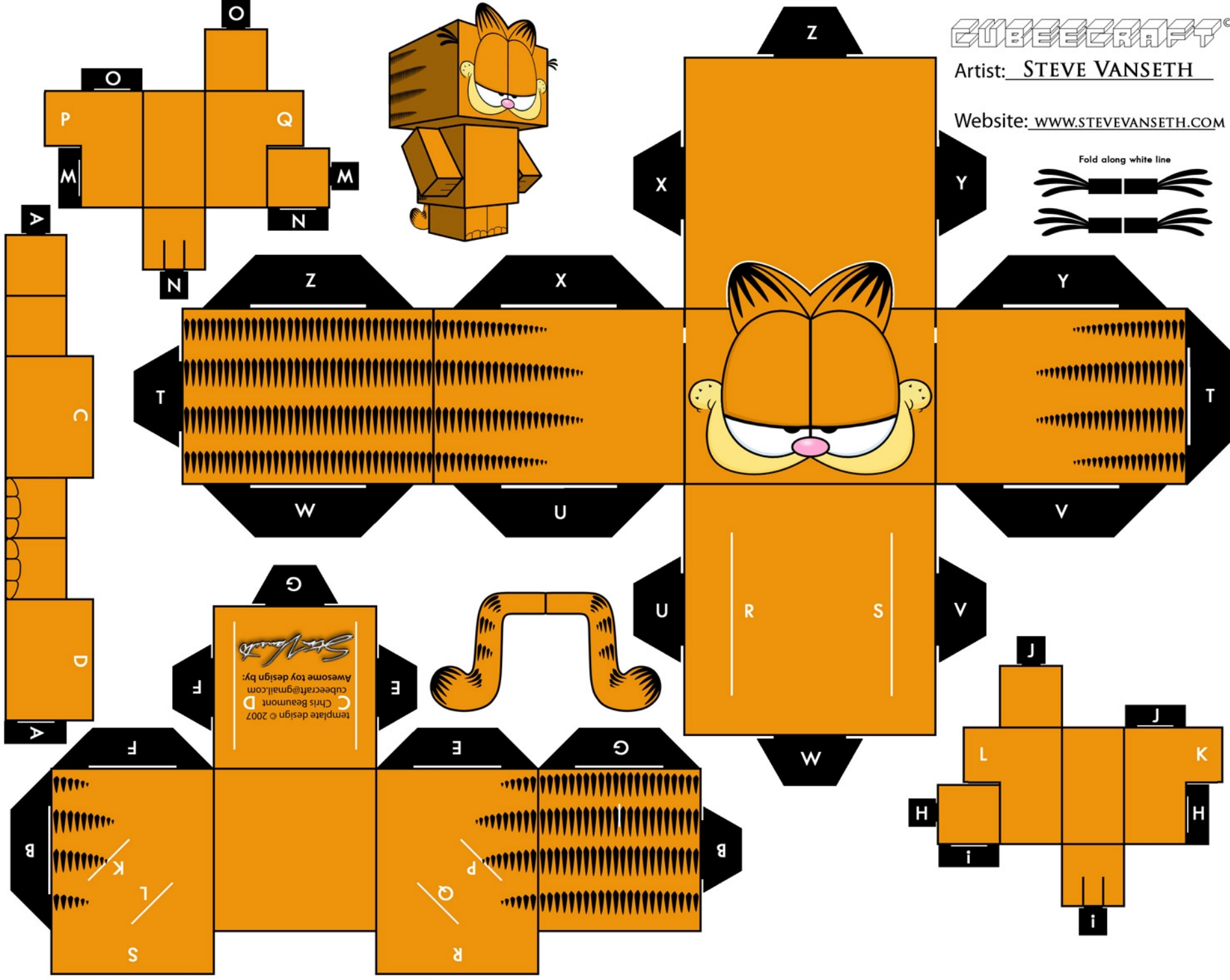
Print. Cut. Fold. Tape.





Carefully cut out the 6 shapes on this page.
Use a hobby knife to slit the white lines labeled with letters.
Tape and glue are not necessary. Thicker paper is recommended.

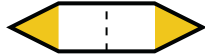
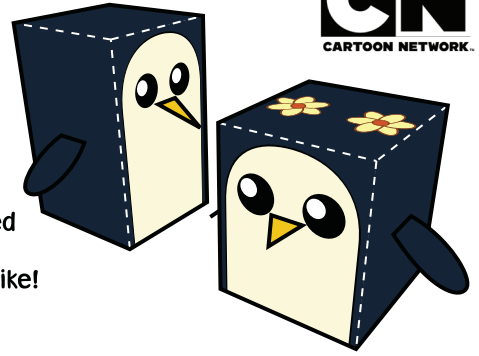
Fold along white line



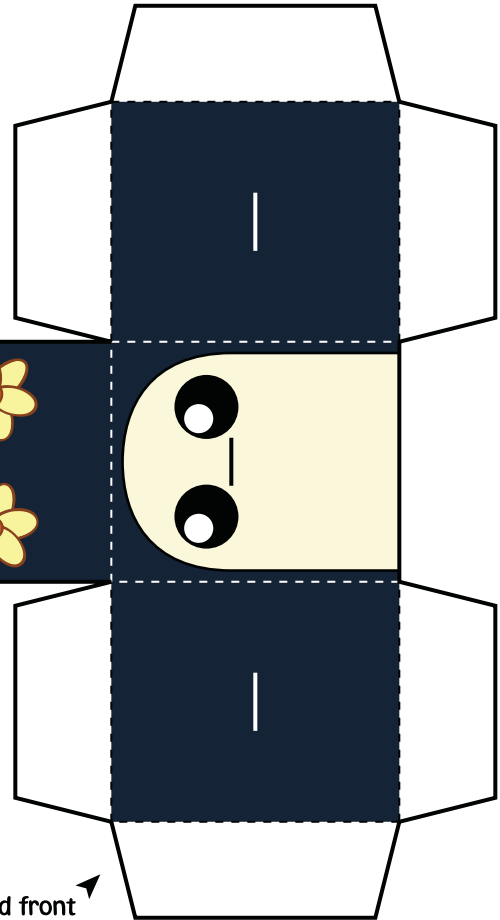
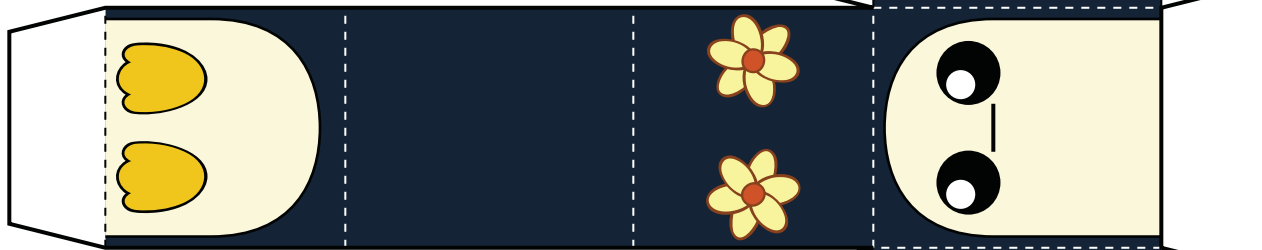


Print template on sturdy paper.
Cut carefully along solid black outline.
Score and fold on dotted lines.
Tape or glue folded tabs to the insides.

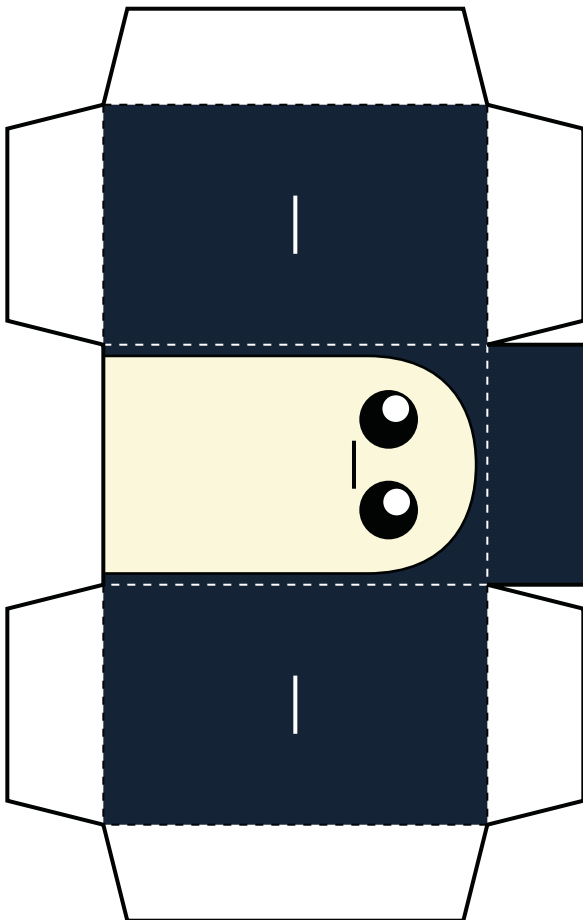
This is what your assembled
ICE PENGUIN
Paper Foldables should look like!



Tape wing and bill sides together
and insert tabs into slits



Cut slits on sides and front



Tape wing and bill sides together
and insert tabs into slits



LEO

the Shih Tzu

Print template on sturdy paper

Cut along solid black outlines

Fold on the dotted lines

Tape/glue leg sides together

Cut slit for
tail piece to fit

Tape/glue folded tabs to the insides

This is what your assembled
LEO the Shih Tzu Paper Foldable
should look like!

Tail piece